

naklon strehe: 40°
 kota terena: -0,36m
 kota pritličja: ±0,00m
 kota stremena: +8,70m
 kolenčni zid : 1,48m

narppin
 TIPSKI PROJEKTI · ARHITEKTURA

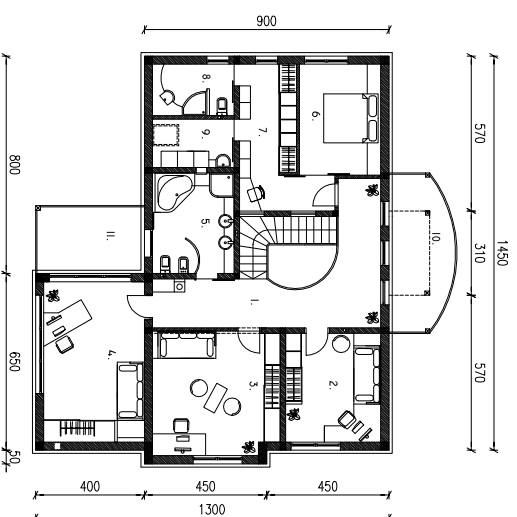
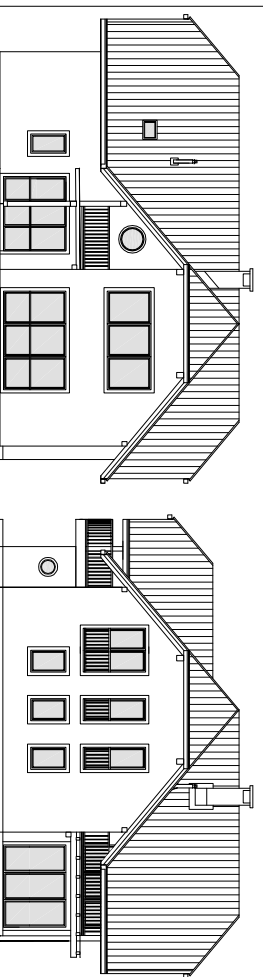
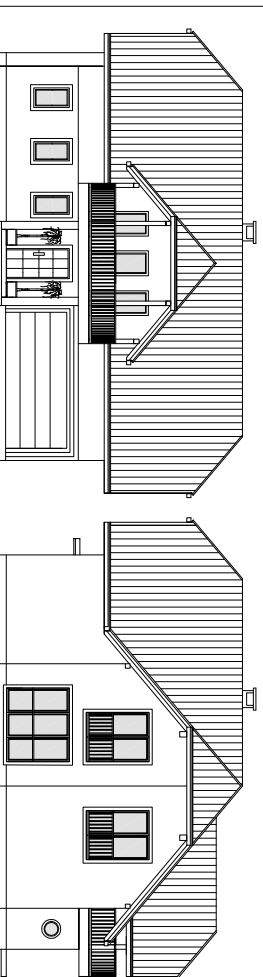
Tipski projekti Nardin d.o.o.

Jarška cesta 36
 1000 Ljubljana, Slovenija
 info@briro-nardin.si

T: +386 1 545 16 00
 F: +386 1 545 16 05
 www.briro-nardin.si

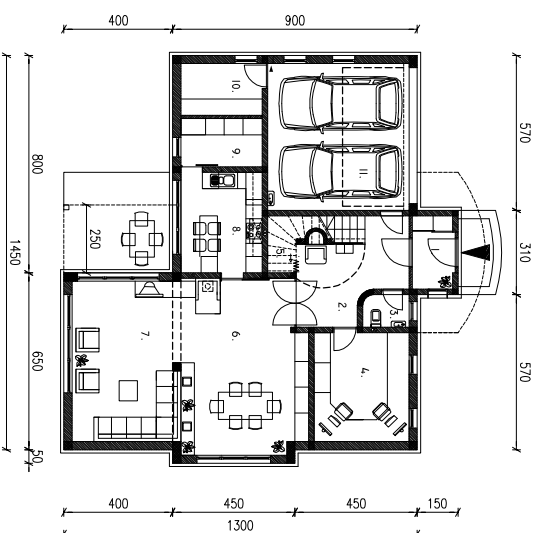
DIMENZIJA: 9,00m x 14,50m + 4,00mx 6,50m
 PRITLIČJE, MANSARDA

TIP - BRUS



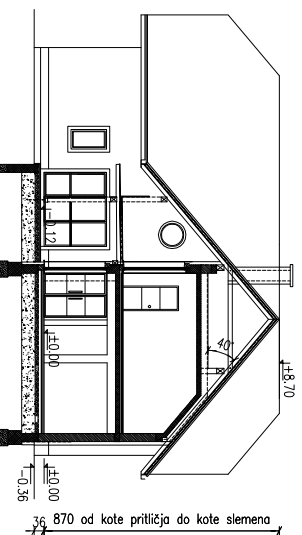
TLORIS MANSARDE
 M=1:200

| | | |
|----|-----------|---------------------|
| 1 | GALERIJA | 20,45m ² |
| 2 | SOBA | 14,00m ² |
| 3 | SOBA | 21,10m ² |
| 4 | SOBA | 14,00m ² |
| 5 | KOPALNICA | 11,10m ² |
| 6 | SPALNICA | 12,20m ² |
| 7 | GARDEROBA | 13,20m ² |
| 8 | KOPALNICA | 5,70m ² |
| 9 | UTILITY | 5,35m ² |
| | SKUPAJ | 117m ² |
| 10 | BALKON | 12,25m ² |
| 11 | BALKON | 10,00m ² |



TLORIS PRITLIČJA
 M=1:200

| | | |
|----|--------------------|---------------------|
| 1 | VHOD Z GARDEROBO | 4,00m ² |
| 2 | AVLA S STOPENIŠČEM | 14,45m ² |
| 3 | WC | 2,00m ² |
| 4 | DELAVNA SOBA | 14,00m ² |
| 5 | ROBOTARNIČA | 2,10m ² |
| 6 | JEDILNICA | 28,40m ² |
| 7 | DNEVNA SOBA | 23,60m ² |
| 8 | KUHINJA | 11,10m ² |
| 9 | SHRAMBA | 5,35m ² |
| 10 | ORODJE | 5,70m ² |
| 11 | GARAŽA | 28,10m ² |
| | SKUPAJ | 138,8m ² |



PREREZ M=1:200